

MICROLENE water purifier

Phone: N.Z. 0800-654-333

F130PM

SIMULATED SEMI-RECESSED DRINKING FOUNTAIN

Model

- F130PM is a non-refrigerated semi-recessed stainless steel drinking fountain for direct connection to a cold water supply or for use with remote chillers.

Standard Features

- ▶ Waterways Are Lead-Free In Materials & Construction
- ▶ Stainless Steel Surfaces
- ▶ Single Push-Button On Cabinet Front Keeps Water Flowing While Button Is Depressed
- ▶ Built-In Pressure Regulator Assures Smooth, Steady Water Flow
- ▶ Anti-Splash Ridge and Integral Strainer Grid
- ▶ Flexi-Guard Rubber Mouthguard On Bubbler
- ▶ Bottom Cover Plate
- ▶ Limited 1-Year Warranty

Installation

- ▶ Prior to roughing-in, consult local, state and federal codes for proper mounting height
- ▶ Shipped with complete instructions

Colours

- Standard finish: Stainless Steel
- Optional finish at extra cost: Regency Bronze



F130PM

Components in this fountain are lead free as defined by the Safe Drinking Water Act Amendments of 1986, and the Lead Contamination Control Act of 1988.



Model covered by this specification complies with all known Plumbing Codes. Certified by Canadian Standards Association.

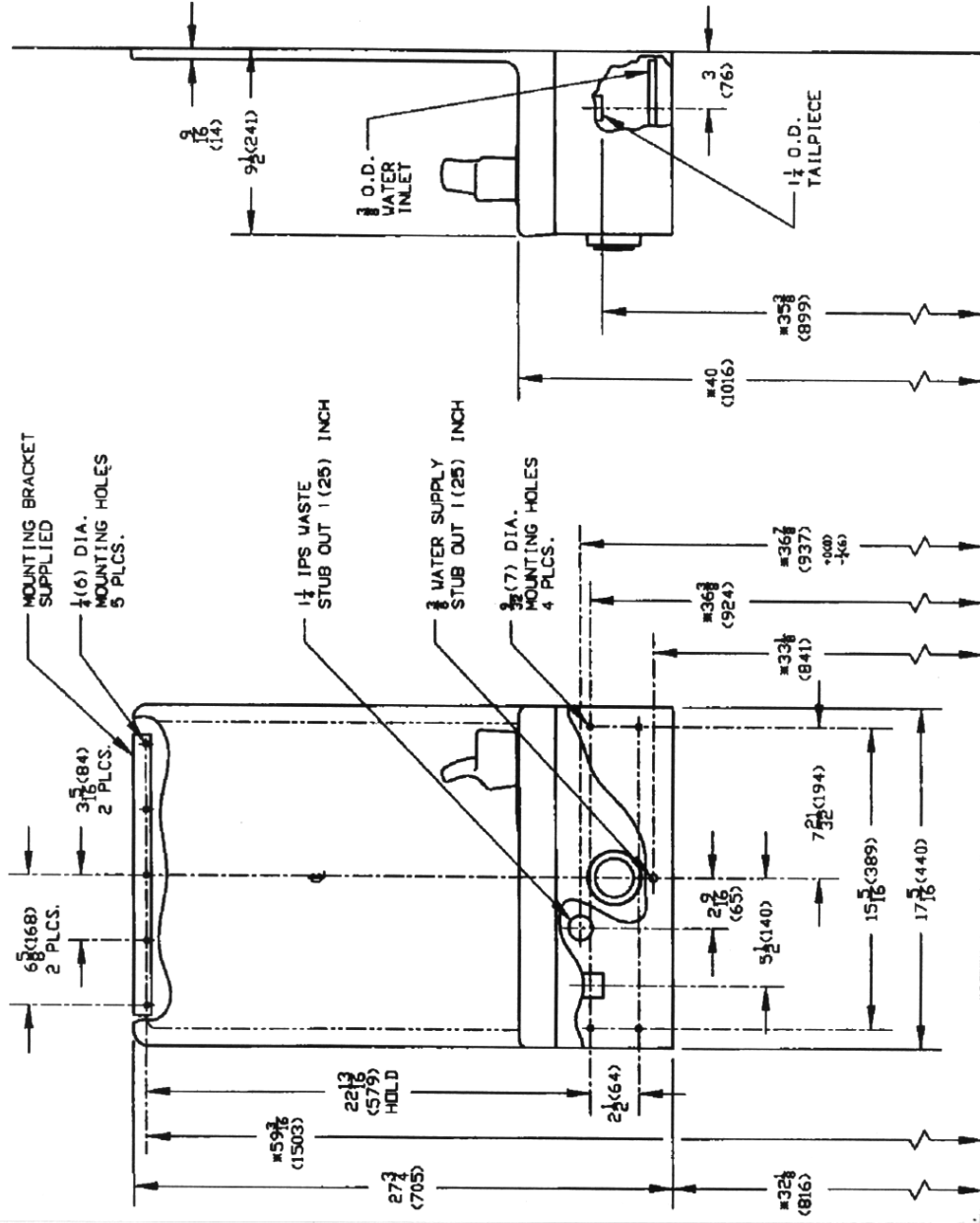
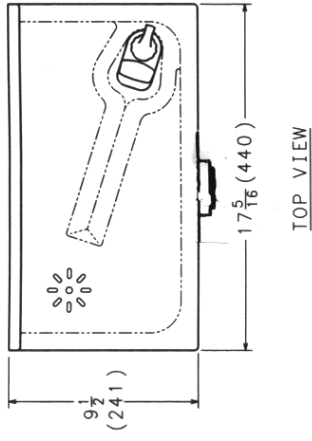
PHYSICAL DIMENSIONS in mm

MODEL	STYLE	HEIGHT	WIDTH	DEPTH	Extend From Wall	Net Wt. Approx.
F130PM	Simulated Semi -Recessed	705	440	241	241	5.9kg

Water flow bubbler is controlled by mechanical push-button.

Specifications are subject to change without notice.

Drinking Fountain Model F130PM



NOTES:

1. TRAP FURNISHED.
2. MICROLENE PURIFIER, PRESSURE LIMITING VALVE AND STOP VALVE - OPTIONAL.
- *3. RECOMMENDED ADULT HEIGHT INSTALLATION SHOWN. ADJUST VERTICAL DIMENSIONS AS REQUIRED TO COMPLY WITH NATIONAL AND LOCAL CODES.
4. ALL DIMENSIONS ARE IN INCHES. DIMENSIONS IN PARENTHESES () ARE IN MILLIMETRES.

Distributed by:
CONTAMINATION CONTROL LTD P.O. Box 14-641, PANMURE, AUCKLAND 6, NZ PH: (09) 570 - 9135
 46 Lunn Ave, MT. Wellington FAX: (0064) (09) 527 - 7654